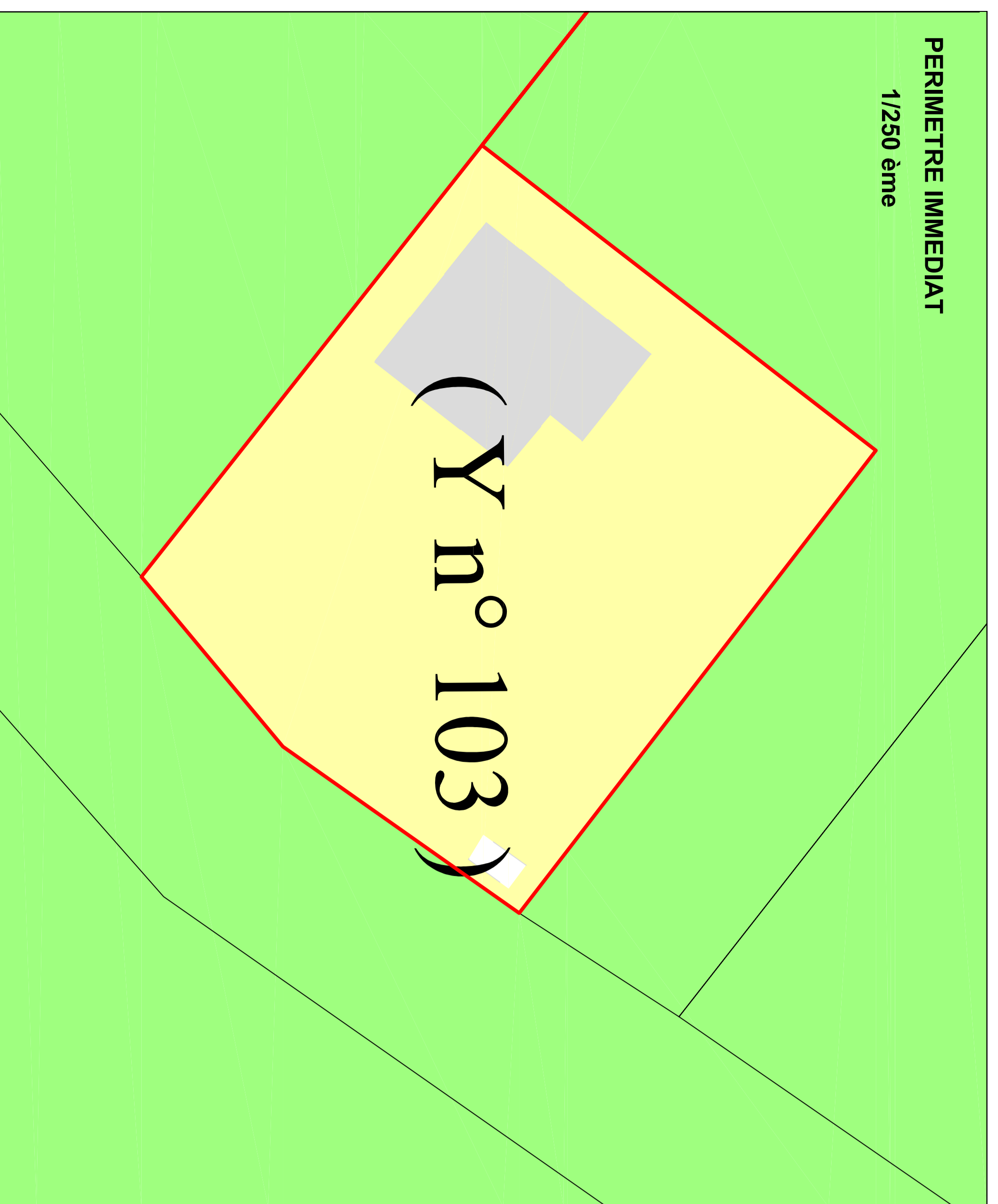
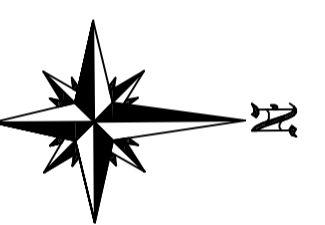
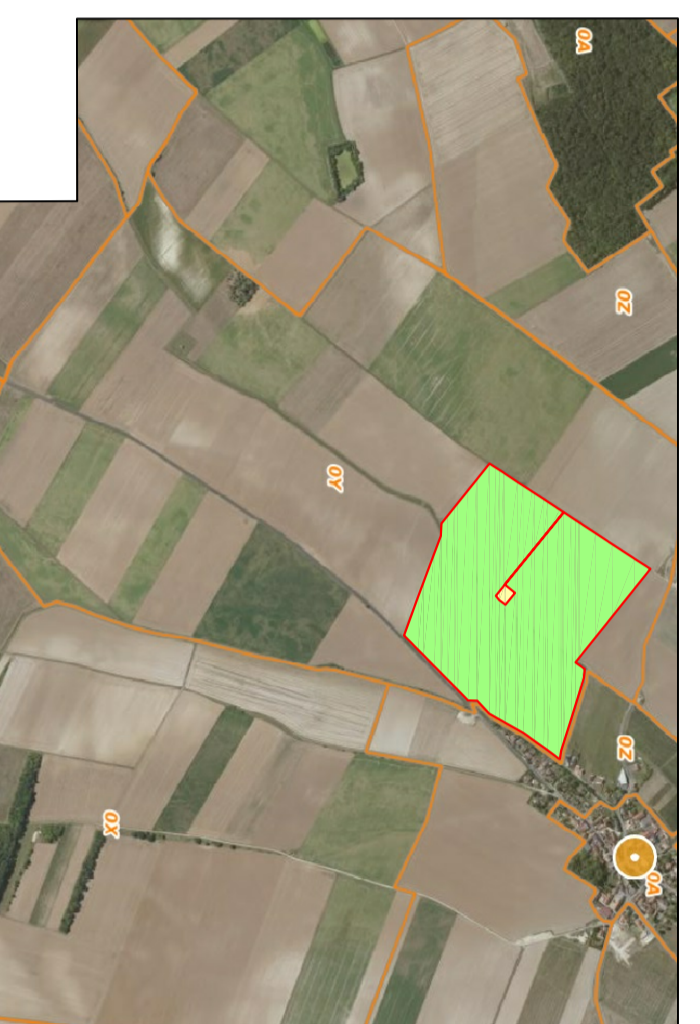


PERIMETRE IMMEDIAT
1/250 ème



PLAN DE SITUATION
1/10 000



TERRA Géomètres-Experts



GÉOMÈTRE-EXPERT

REIMS (45000) 1

REIMS (45000) 1

REIMS (45000) 1

REIMS (45000) 1

REIMS (45000) 1

REIMS (45000) 1

REIMS (45000) 1

REIMS (45000) 1

REIMS (45000) 1

REIMS (45000) 1

REIMS (45000) 1

REIMS (45000) 1

REIMS (45000) 1

REIMS (45000) 1

REIMS (45000) 1

REIMS (45000) 1

REIMS (45000) 1

REIMS (45000) 1

REIMS (45000) 1

REIMS (45000) 1

REIMS (45000) 1

REIMS (45000) 1

REIMS (45000) 1

REIMS (45000) 1

REIMS (45000) 1

REIMS (45000) 1

REIMS (45000) 1

REIMS (45000) 1

REIMS (45000) 1

REIMS (45000) 1

REIMS (45000) 1

DEPARTEMENT DE LA MARNE
COMMUNE DE VILLERS AUX NOEUDS

Le Gros Saule
Section Y

PLAN DES PERIMETRES
DE PROTECTION DU
CAPTAGE

1/2000ème

OBSERVATIONS :

Système de coordonnées : Lambert 2E

LEGENDE

- Perimètre immédiat
- Perimètre de protection



REFERENCES
N° de dossier : AD 195
DATE : 8 septembre 2021

